

FEATURES

- Excellent Linearity
- Extremely low noise
- Excellent flatness
- Rugged construction
- FC/APC
- AGC



DESCRIPTION

SMO2700 is a low power, but good performance optical receiver. Output level is 70dBuV @ -5dBm. Small size with FC/APC connector which can be assembled in a small case.

QUICK REFERENCE DATA

SYMBOL	PARAMETER	CONDITIONS	MIN	MAX	UNITS
f	Frequency range		45	2700	MHz
S ₂₂	Output return losses	f=45 to 900 MHz	-	-12	dB
S ₂₂	Output return losses	f=1000 to 2700 MHz	-	-7	dB
I _{out}	Total current consumption (DC)	V _B =5V	200	220	mA

HANDLING

Fiberglass optical coupling: maximum tensile strength=5N;minimum bending radius=30mm

LIMITING VALUES

In accordance with the Absolute Maximum Rating System

SYMBOL	PARAMETER	CONDITION	MIN.	MAX.	UNITS
P _{in}	Optical input power		-16	+5	dBm
	Optical return loss	0dBm		-35	dB
T _{stg}	Storage temperature		-40	+85	°C

SANLAND TECHNOLOGY

·Tel: 86-0755-28968333
·Fax:86-0755-89724455
·2019.8

·Http: www.sanlandtech.com
·E-mail: info@sanlandtech.com

T _{mb}	Operating mounting base temperature	continuous	-20	+85	°C
ESD	ESD sensitivity	Human body model; R=1.5K Ω ;C=100pF	500	-	V

CHARACTERISTICS

(Bandwidth 45 to 1000MHz; T_{mb}=25°C, V_B=5V, Z_S=Z_L=75 Ω)

SYMBOL	PARAMETER	UNIT	MIN.	TYP.	MAX.	CONDITIONS
S	responsively	V/W	850	-	-	λ =1300nm-1600nm
FL1	Flatness of frequency response	dB	-	± 1.0	± 1.5	f=45 to 1000 MHz, wide band flatness
FL2	Flatness of frequency response	dB	-	-	± 0.4	Narrow bandwidth per 7MHz
SL	Slope	dB	0	2	3	From 45~900MHz
S ₂₂	Output Return Loss	dB	-12	-	-	f=45 to 900 MHz
S ₂₂	Output Return Loss	dB	-7	-	-	f=1000 to 2700 MHz
I _{tot}	Total Current Consumption	mA	200	-	220	V _B =5V
Automatic Gain Control Receiving Power: -10~0dBm (According to customer requirements)						
V _{o1}	Output Voltage	dBuV	70			P _{opt} = -5dBm BW=45~900MHz 42 channels T=25°C OMI=4% per channel
V _{o2}	Output Voltage	dBuV	68		80.5	P _{opt} = -5dBm BW=45~900MHz 42 channels T=0~40°C OMI=4% per channel
CTB	Composite Triple Beat	dB	-	-	-60	Optical power -3dBm
CSO	Composite Second Order distortion	dB	-	-	-60	42 channels PAL-D .175.25MHz
C-spurious	Carrier to spurious	dB	-	-	-57	OMI=4% per channel

SANLAND TECHNOLOGY

·Tel: 86-0755-28968333
·Fax:86-0755-89724455
·2019.8

·Http: www.sanlandtech.com
·E-mail: info@sanlandtech.com

CTB	Composite Triple Beat	dB	-	-	-57	Optical power +1dBm 42 channels PAL-D .175.25MHz OMI=4% per channel
CSO	Composite Second Order distortion	dB	-	-	-56	
C-spurious	Carrier to spurious	dB	-	-	-56	
CNR	Noise carrier rating	dB	45	-	-	Optical power -7dBm 42 channels PAL-D .175.25MHz OMI=4% per channel

Please note:

Vo1 are according to the optical change from -10dBm ~0dBm. For example, In -10dBm the output level is 80dBuV, but in the 0dBm maybe output level is 82dBuV.

Vo2 are according to the temperature change .for example: when the temperature stay 40℃,the output level will lower 0.5dB than 25℃. When the temperature stay 0℃,the output level will higher 0.5dB than 25℃.

The minimum of CNR in different optical power

C/N ≥ 45 @ -5dBm in the frequency =175.25MHz

C/N ≥ 46 @ -4dBm in the frequency =175.25MHz

C/N ≥ 47 @ -3dBm in the frequency =175.25MHz

C/N ≥ 48 @ -2dBm in the frequency =175.25MHz

C/N ≥ 49 @ -1dBm in the frequency =175.25MHz

C/N ≥ 50 @ 0dBm in the frequency =175.25MHz

The module normally operates at $V_B=5 \pm 0.25$ V

Certification

The measurement result is according to

ANSI_SCTE 06 2009.

ICE61000-4-3.

EN 607286 Cable networks for television signals, sound signals and interactive services.

Part6: Optical equipment services.

EN 607283 Cable networks for television signals, sound signals and interactive services.

Part3: Active wide band equipment for cable services.

Photodiode pin monitoring voltage corresponding to the table

SANLAND TECHNOLOGY

·Tel: 86-0755-28968333
·Fax:86-0755-89724455
·2019.8

·Http: www.sanlandtech.com
·E-mail: info@sanlandtech.com

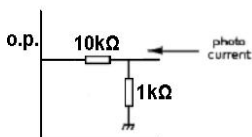
O.P. -Power dBm	Voltage V	O.P. -Power dBm	Voltage V	O.P. -Power dBm	Voltage V	O.P. -Power dBm	Voltage V	O.P. -Power dBm	Voltage V	O.P. -Power dBm	Voltage V
2.00	1.5849	-1.00	0.7943	-4.00	0.3981	-7.00	0.1995	-10.00	0.1000	-13.00	0.0501
1.90	1.5488	-1.10	0.7762	-4.10	0.3890	-7.10	0.1950	-10.10	0.0977	-13.10	0.0490
1.80	1.5136	-1.20	0.7586	-4.20	0.3802	-7.20	0.1905	-10.20	0.0955	-13.20	0.0479
1.70	1.4791	-1.30	0.7413	-4.30	0.3715	-7.30	0.1862	-10.30	0.0933	-13.30	0.0468
1.60	1.4454	-1.40	0.7244	-4.40	0.3631	-7.40	0.1820	-10.40	0.0912	-13.40	0.0457
1.50	1.4125	-1.50	0.7079	-4.50	0.3548	-7.50	0.1778	-10.50	0.0891	-13.50	0.0447
1.40	1.3804	-1.60	0.6918	-4.60	0.3467	-7.60	0.1738	-10.60	0.0871	-13.60	0.0437
1.30	1.3490	-1.70	0.6761	-4.70	0.3388	-7.70	0.1698	-10.70	0.0851	-13.70	0.0427
1.20	1.3183	-1.80	0.6607	-4.80	0.3311	-7.80	0.1660	-10.80	0.0832	-13.80	0.0417
1.10	1.2882	-1.90	0.6457	-4.90	0.3236	-7.90	0.1622	-10.90	0.0813	-13.90	0.0407
1.00	1.2589	-2.00	0.6310	-5.00	0.3162	-8.00	0.1585	-11.00	0.0794	-14.00	0.0398
0.90	1.2303	-2.10	0.6166	-5.10	0.3090	-8.10	0.1549	-11.10	0.0776	-14.10	0.0389
0.80	1.2023	-2.20	0.6026	-5.20	0.3020	-8.20	0.1514	-11.20	0.0759	-14.20	0.0380
0.70	1.1749	-2.30	0.5888	-5.30	0.2951	-8.30	0.1479	-11.30	0.0741	-14.30	0.0372
0.60	1.1482	-2.40	0.5754	-5.40	0.2884	-8.40	0.1445	-11.40	0.0724	-14.40	0.0363
0.50	1.1220	-2.50	0.5623	-5.50	0.2818	-8.50	0.1413	-11.50	0.0708	-14.50	0.0355
0.40	1.0965	-2.60	0.5495	-5.60	0.2754	-8.60	0.1380	-11.60	0.0692	-14.60	0.0347
0.30	1.0715	-2.70	0.5370	-5.70	0.2692	-8.70	0.1349	-11.70	0.0676	-14.70	0.0339
0.20	1.0471	-2.80	0.5248	-5.80	0.2630	-8.80	0.1318	-11.80	0.0661	-14.80	0.0331
0.10	1.0233	-2.90	0.5129	-5.90	0.2570	-8.90	0.1288	-11.90	0.0646	-14.90	0.0324
0.00	1.0000	-3.00	0.5012	-6.00	0.2512	-9.00	0.1259	-12.00	0.0631	-15.00	0.0316
-0.10	0.9772	-3.10	0.4898	-6.10	0.2455	-9.10	0.1230	-12.10	0.0617	-15.10	0.0309
-0.20	0.9550	-3.20	0.4786	-6.20	0.2399	-9.20	0.1202	-12.20	0.0603	-15.20	0.0302
-0.30	0.9333	-3.30	0.4677	-6.30	0.2344	-9.30	0.1175	-12.30	0.0589	-15.30	0.0295
-0.40	0.9120	-3.40	0.4571	-6.40	0.2291	-9.40	0.1148	-12.40	0.0575	-15.40	0.0288
-0.50	0.8913	-3.50	0.4467	-6.50	0.2239	-9.50	0.1122	-12.50	0.0562	-15.50	0.0282
-0.60	0.8710	-3.60	0.4365	-6.60	0.2188	-9.60	0.1096	-12.60	0.0550		
-0.70	0.8511	-3.70	0.4266	-6.70	0.2138	-9.70	0.1072	-12.70	0.0537		
-0.80	0.8318	-3.80	0.4169	-6.80	0.2089	-9.80	0.1047	-12.80	0.0525		
-0.90	0.8128	-3.90	0.4074	-6.90	0.2042	-9.90	0.1023	-12.90	0.0513		

Notes:

The calculation formula of: $\text{dBm} = 10 \cdot \lg(0.001 \cdot \text{mV}^2 / R)$

When measured the optical power corresponding to the monitor volt. may cause some tolerance that the range is $\pm 0.08\text{V}$

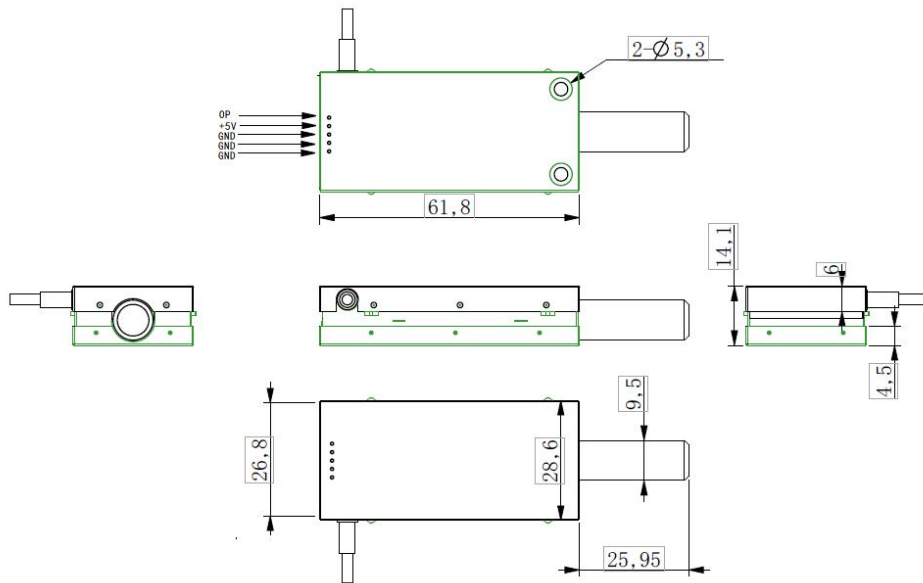
Before you measure, please clean the connector and fix it very well.



SANLAND TECHNOLOGY

·Tel: 86-0755-28968333
 ·Fax: 86-0755-89724455
 ·2019.8

·Http: www.sanlandtech.com
 ·E-mail: info@sanlandtech.com



Q